



Bridgman Road, London, W4 5BA

£599,950

**WHITMAN & CO.**

SALES · LETTINGS · COMMERCIAL

- Bright period maisonette
- Share in the freehold
- Central glazed atrium
- Sought after residential street
- Double high reception room
- No chain

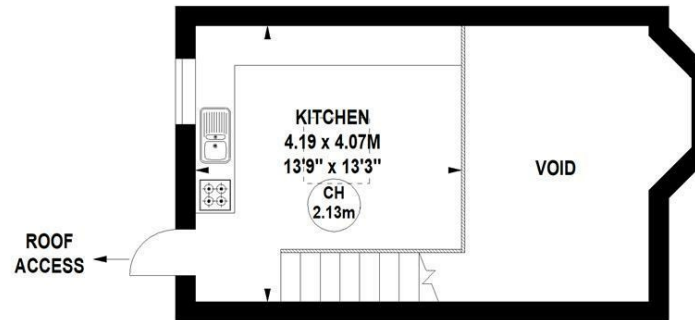
Tenure - Leasehold with Share of Freehold  
 Lease length - 994 Years remaining  
 Ground rent - Peppercorn  
 Service charge - 50% of all outgoings  
 Local authority - Ealing  
 Council tax - Band F

## THE PROPERTY

An exceptionally bright two bedroom period maisonette with feature vaulted ceilings and galleried kitchen ideally located in this sought after residential area offering close proximity to numerous amenities. This superb property comprises two double bedrooms, luxury bathroom, 15' feature double height reception room, fully integrated kitchen/breakfast room with central glazed atrium, extensive built in storage and a share in the freehold. Situated in this tree lined residential street offering close proximity to train, bus and tube facilities and the diverse shops on Chiswick High Road. No chain.

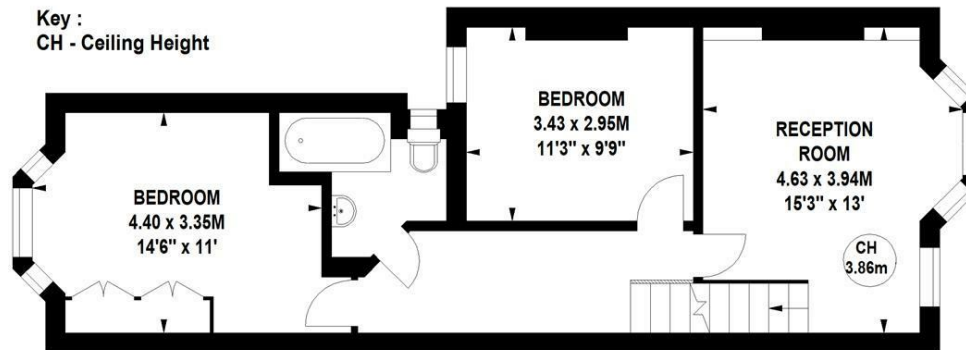
## Bridgman Road, W4

Approximate gross internal area  
**73.67 sq m / 793 sq ft**  
 (Excluding Void)

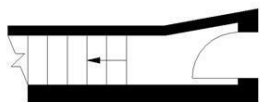


Second Floor

Key :  
 CH - Ceiling Height



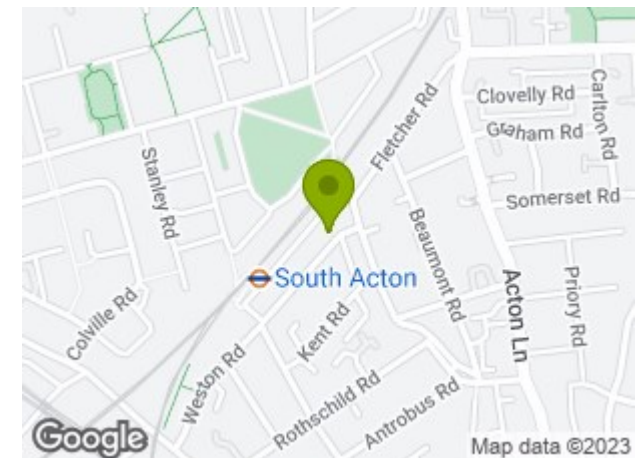
First Floor



Ground Floor  
 Entrance

Not to scale, for guidance only and must not be relied upon as a statement of fact.  
 All measurements and areas are approximate only

## SITUATION



5-7 Turnham Green Terrace, Chiswick, London, W4 1RG

Tel 020 8747 8800

E-mail [sales@whitmanandco.com](mailto:sales@whitmanandco.com)

Website [www.whitmanandco.com](http://www.whitmanandco.com)



MISREPRESENTATION ACT 1967

Whitman & Co. for themselves and for the vendors give notice that these particulars do not constitute any part of, an offer of contract. All statements contained in these particulars are made without responsibility on the part of Whitman & Co. or the vendor. None of the statements contained in these particulars is to be relied upon as statements or representations of facts. Any intending purchaser must satisfy himself by inspection or otherwise as to the correctness of each of the statements contained in these particulars. The vendor does not make or give, and neither Whitman & Co. or any person in their employment has any authority to make or give, any representation or warranty whatever in relation to the property.